



Nhs Community Pharmacy - Saltcoats

Pharmacy In Saltcoats



I'm not a robot



RECAPTCHA

Published on: 26/05/25	Hits: 134
Comments: 0	See comments
Votes: 3	Score: 4

https://www.rajeunir.co.uk/pharmacy/saltcoats/nhs-community-pharmacy-saltcoats_341466.php



Pharmacy In Saltcoats

Nhs Community Pharmacy - Saltcoats

NHS Community Pharmacy in Saltcoats: A Comprehensive Guide

If you're in Saltcoats and in need of pharmacy services, the NHS Community Pharmacy is an essential resource. This guide will provide you with key information regarding its **accessibility** and payment options.

Accessibility Features

The NHS Community Pharmacy in Saltcoats is designed to be **accessible** to

everyone. One of the standout features is its **wheelchair-accessible entrance**, ensuring that individuals with mobility challenges can easily enter and receive the services they need.

Payment Options

When it comes to **payments**, this pharmacy offers a range of options for your convenience. You can use traditional cash methods, or if you prefer, the pharmacy also accepts **credit cards**. This flexibility makes it easier for customers to manage their transactions without hassle.

Conclusion

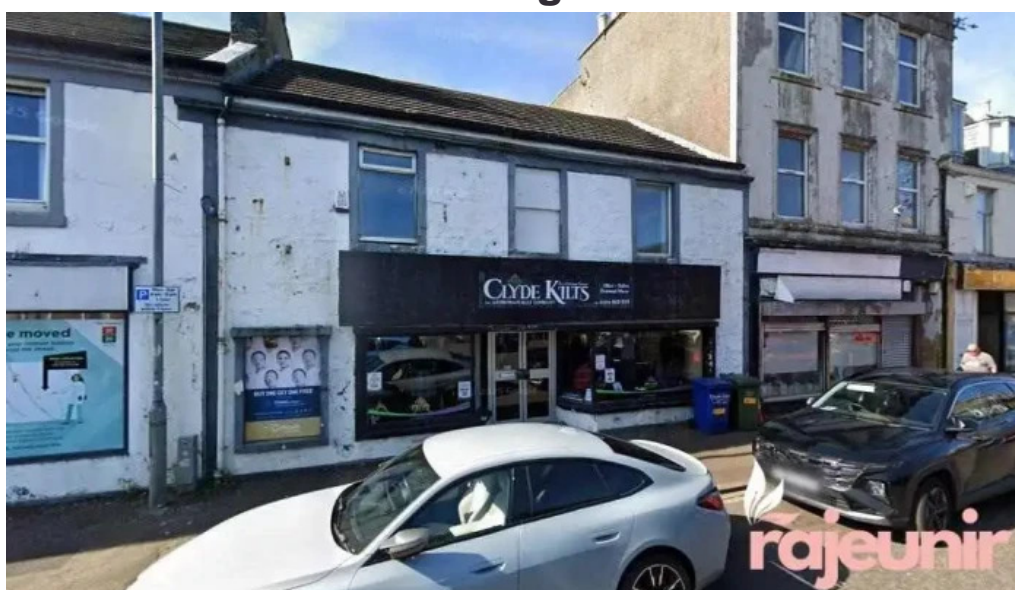
The NHS Community Pharmacy in Saltcoats stands out for its commitment to accessibility and customer convenience. Whether you need a prescription filled or advice on health concerns, you can do so with ease and confidence.

The location of our premises is

, Saltcoats, - United Kingdom (GB)

If you require to update any detail that you believe is not accurate related to this portal, we urge you to send us a message and we will handle it at the earliest convenience. Thank you in advance we appreciate it.

Images



Nhs community pharmacy saltcoats



Nhs community pharmacy map



Nhs community pharmacy all

Tags

Payments, Credit cards, Wheelchair-accessible entrance, Accessibility

Related content

4.4 * *Gallagher Pharmacy - Saltcoats*

5.0 * *Gallagher Pharmacy - Saltcoats*

3.8 * *Mint Pharmacy - Health & Nhs Travel Clinic - Coatbridge*

3.0 * *Well Pharmacy - Kirkliston*

4.6 *	<i>Islay Pharmacy - Isle Of Islay</i>
4.8 *	<i>Gallagher Pharmacy - Ardrossan</i>
4.6 *	<i>Well Pharmacy - Arbroath</i>
4.0 *	<i>Well Pharmacy - Johnstone</i>
4.5 *	<i>Clerkhill Pharmacy - Peterhead</i>
4.8 *	<i>Central Pharmacy - Bilston</i>

Categories

apartment building
beauty product supplier
beauty salon
beauty supply store
car dealer
cemetery
chemical manufacturer
coffee shop
convenience store
cosmetics store
discount store
doctor
drug store
farm
florist
grocery store
health and beauty shop
laboratory
magazine store
newsstand
optician
pharmaceutical company
pharmaceutical products wholesaler
pharmacy
post office
primary school
pub
shopping mall
supermarket

tire shop
veterinarian